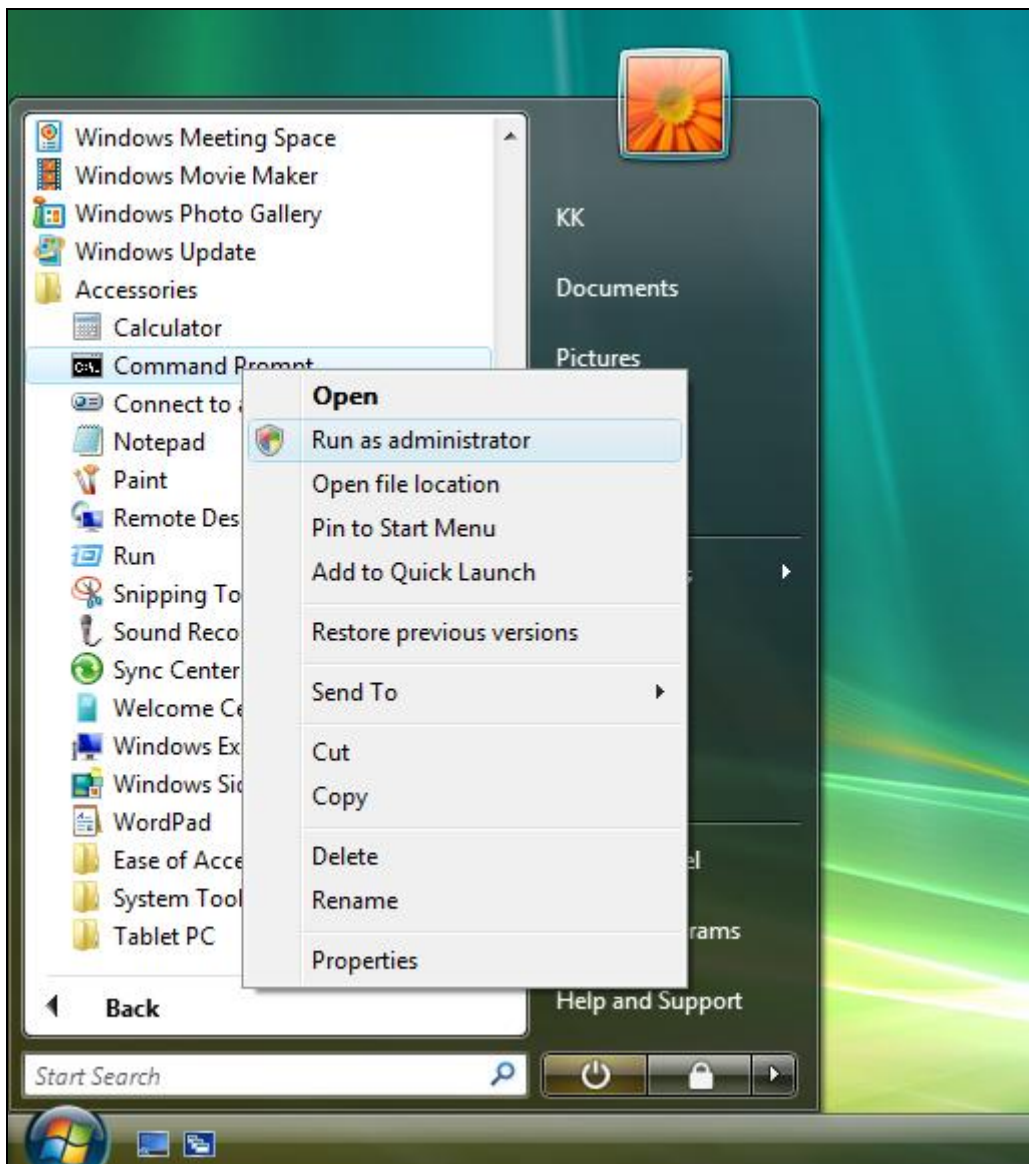


In [Windows Mode]

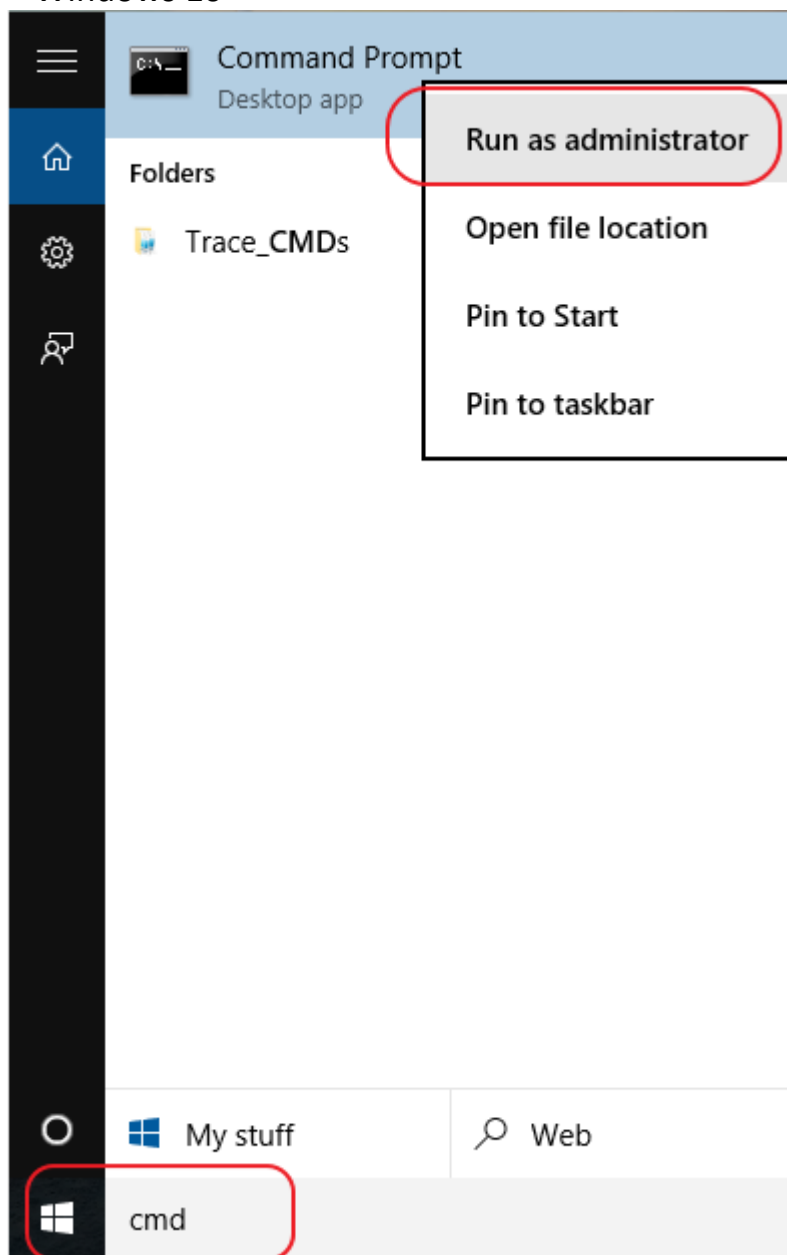
- 1.1 Get EC Firmware Package.
- 1.2 Boot to Windows.

[By Windows command line](#)

2. Run Command Prompt as **Administrator** in Windows.
< Windows 7>



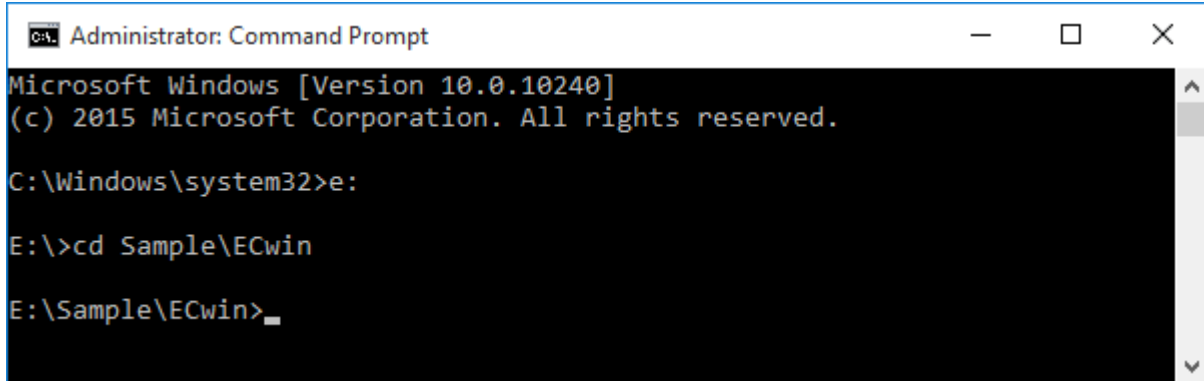
< Windows 10 >



note: Key in 'cmd' at search bar and select "Run as administrator"

Windows

- 2.1 Key in 'cd ECwin' (Go to EC Firmware package path , e.g. "E:\Sample\ECwin")



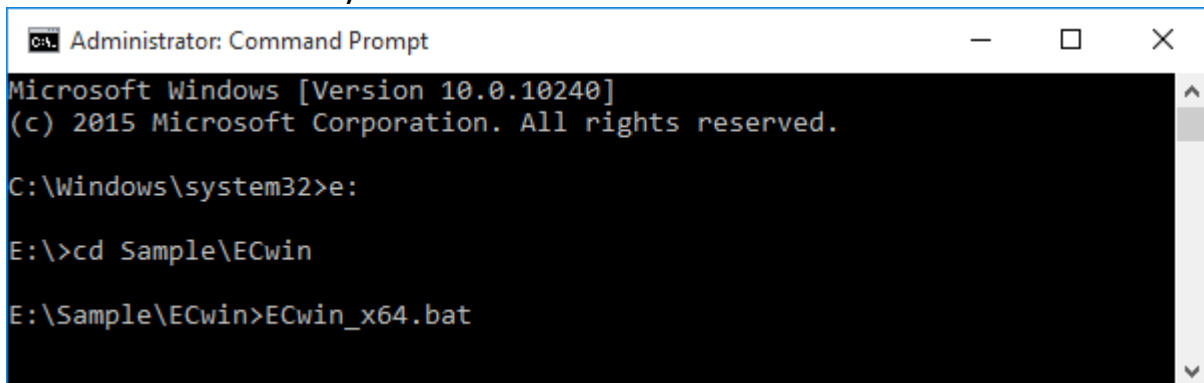
```
Administrator: Command Prompt
Microsoft Windows [Version 10.0.10240]
(c) 2015 Microsoft Corporation. All rights reserved.

C:\Windows\system32>e:

E:\>cd Sample\ECwin

E:\Sample\ECwin>
```

- 2.2 Key in 'ECwin.bat' for 32-bit Windows and following pictures are reference only.
- 2.3 Key in 'ECwin_x64.bat' for 64-bit Windows and following pictures are reference only.



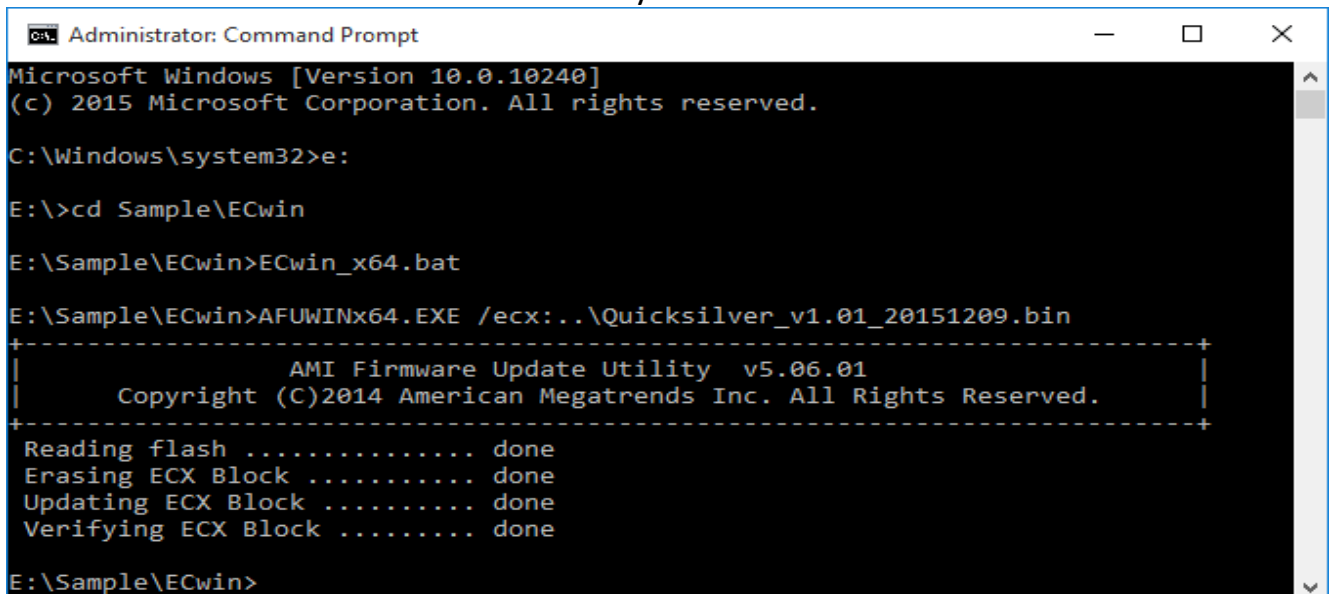
```
Administrator: Command Prompt
Microsoft Windows [Version 10.0.10240]
(c) 2015 Microsoft Corporation. All rights reserved.

C:\Windows\system32>e:

E:\>cd Sample\ECwin

E:\Sample\ECwin>ECwin_x64.bat
```

- 2.4 Press <Enter> and start to flash System BIOS



```
Administrator: Command Prompt
Microsoft Windows [Version 10.0.10240]
(c) 2015 Microsoft Corporation. All rights reserved.

C:\Windows\system32>e:

E:\>cd Sample\ECwin

E:\Sample\ECwin>ECwin_x64.bat

E:\Sample\ECwin>AFUWINx64.EXE /ecx:..\Quicksilver_v1.01_20151209.bin
+-----+
|               AMI Firmware Update Utility   v5.06.01               |
|      Copyright (C)2014 American Megatrends Inc. All Rights Reserved.      |
+-----+
Reading flash ..... done
Erasing ECX Block ..... done
Updating ECX Block ..... done
Verifying ECX Block ..... done

E:\Sample\ECwin>
```

- 2.5 Shutdown system and remove AC power cord over 15 seconds to ensure that system is at G3 state.
- 2.6 Plug AC power cord.
- 2.7 Boot system and Press to enter BIOS setup menu.
- 2.8 Check the EC Firmware version and build date is correct.

EC Firmware	
Version	1.01
Build Date	12/09/2015